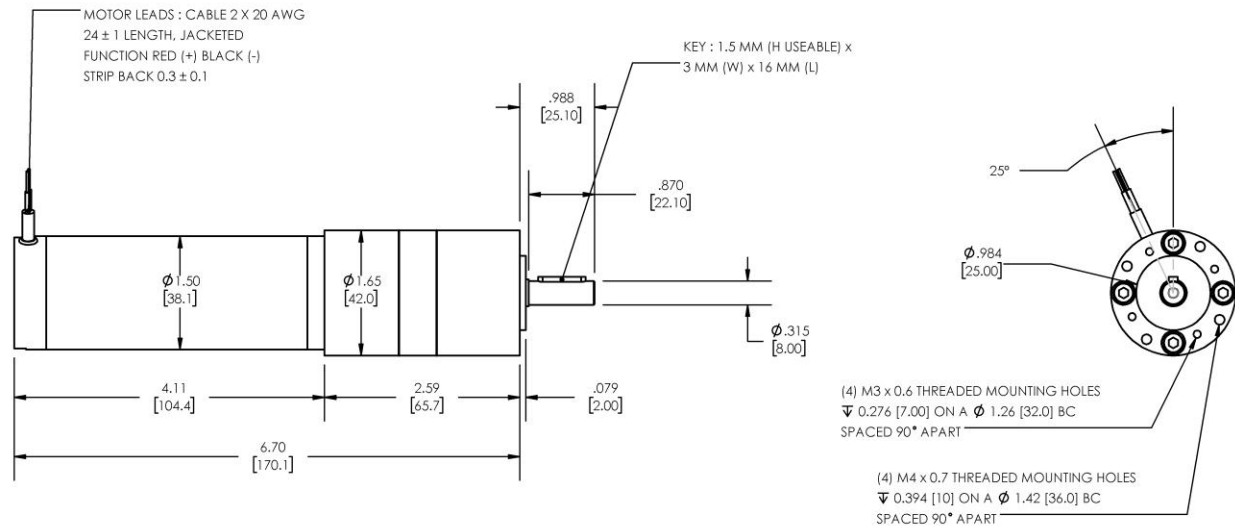


Model Number:
MMP S17-400E-24V GP42-03.7


DIMENSIONS ARE INCHES [MM] UNLESS OTHERWISE STATED

PLANETARY GEARMOTOR OUTPUT PARAMETERS:	VALUE	UNITS	TOLERANCE
Gearhead Ratio (exact)	3.70 : 1		
Gearhead Shaft Output Speed (at full-load)	777	RPM	MAX
Gearmotor Rated Continuous Torque	5.2	In-Lbs	MAX
Gearmotor Rated Peak Torque	12++	In-Lbs	----
Gearhead Standard Backlash	54	Arc Minutes	MAX
Gearhead Efficiency	80%	----	----
Output Shaft Radial Load Capacity	36	Lbs	MAX
Output Shaft Axial Load Capacity	12	Lbs	MAX
Gearmotor Total Weight	2.0	Lbs	MAX

++ All Peak Torque values are dependent upon duty. Contact our sales office for details.

DC MOTOR PERFORMANCE PARAMETERS:	VALUE	UNITS	TOLERANCE
Rated DC Voltage	24	DC VOLTS	----
Rated Continuous Current	3.94	AMPERES	----
No-Load Speed	4233	RPM	MAX
Rated Speed	2874	RPM	+/- 15%
Rated Continuous Power Out	59	WATTS	+/- 15%
Rated Continuous Torque	28	OZ-IN	----
Peak Torque (motor only)	63	OZ-IN	----
No-Load Current	0.34	AMPERES	MAX
Back EMF Constant (Ke)	5.7	V/KRPM	+/- 10%
Torque Constant (Kt)	7.7	OZ-IN/AMP	+/- 10%
DC Armature Resistance	1.95	OHMS	+/- 15%
Armature Inductance	0.50	mH	+/- 15%
Armature temperature	155	DEG. C	MAX

NOTES:

- ENCODER & BRAKE OPTIONS AVAILABLE – [FOLLOW THIS LINK FOR DETAILS](#)
- NEMA MOUNTING FLANGE OPTION AVAILABLE – [FOLLOW THIS LINK FOR DETAILS](#)

MIDWEST MOTION PRODUCTS
DESIGN, MANUFACTURING & DISTRIBUTION - MOTION CONTROL EQUIPMENT
www.midwestmotion.com

 email: sales@midwestmotion.com